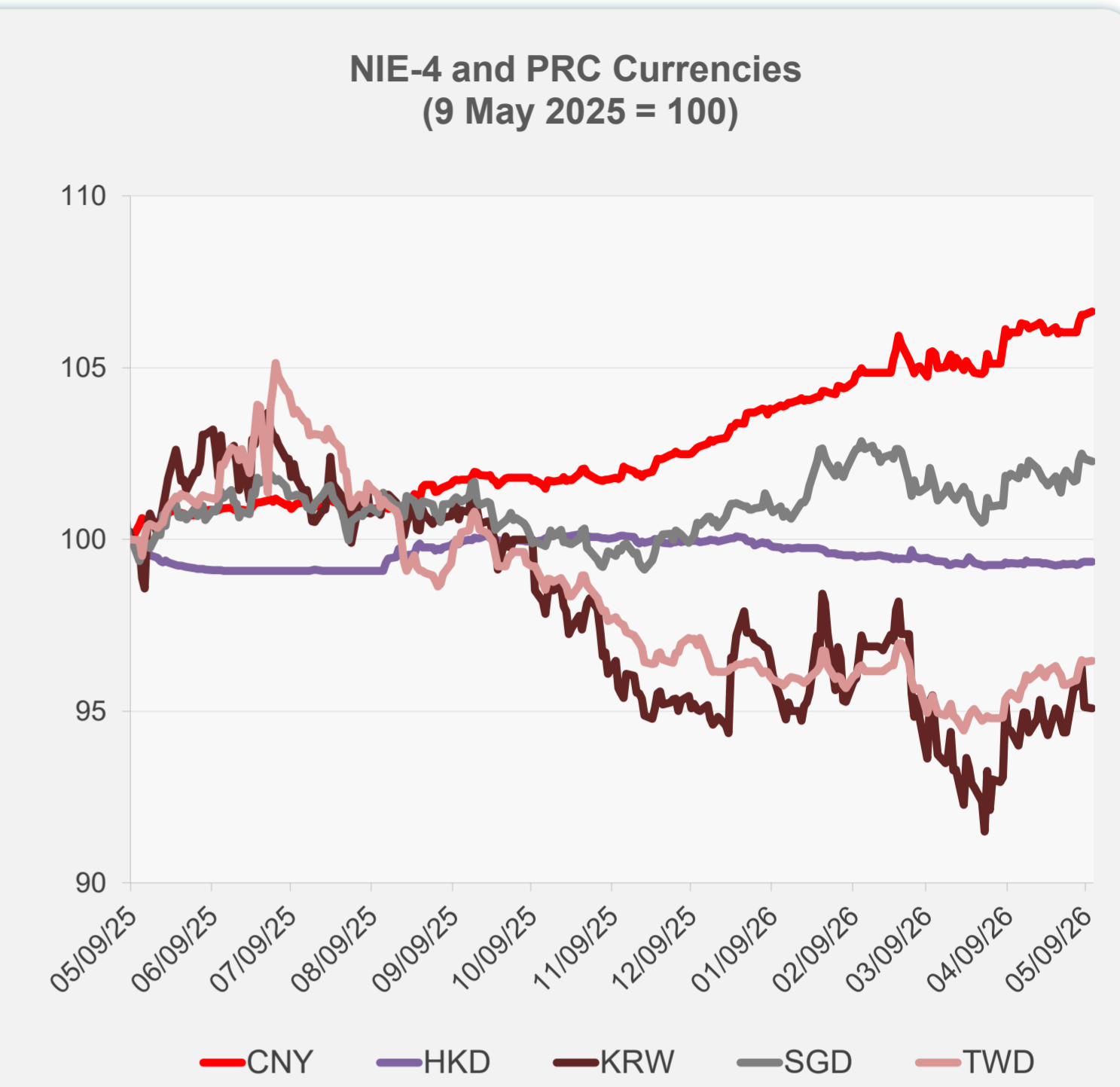
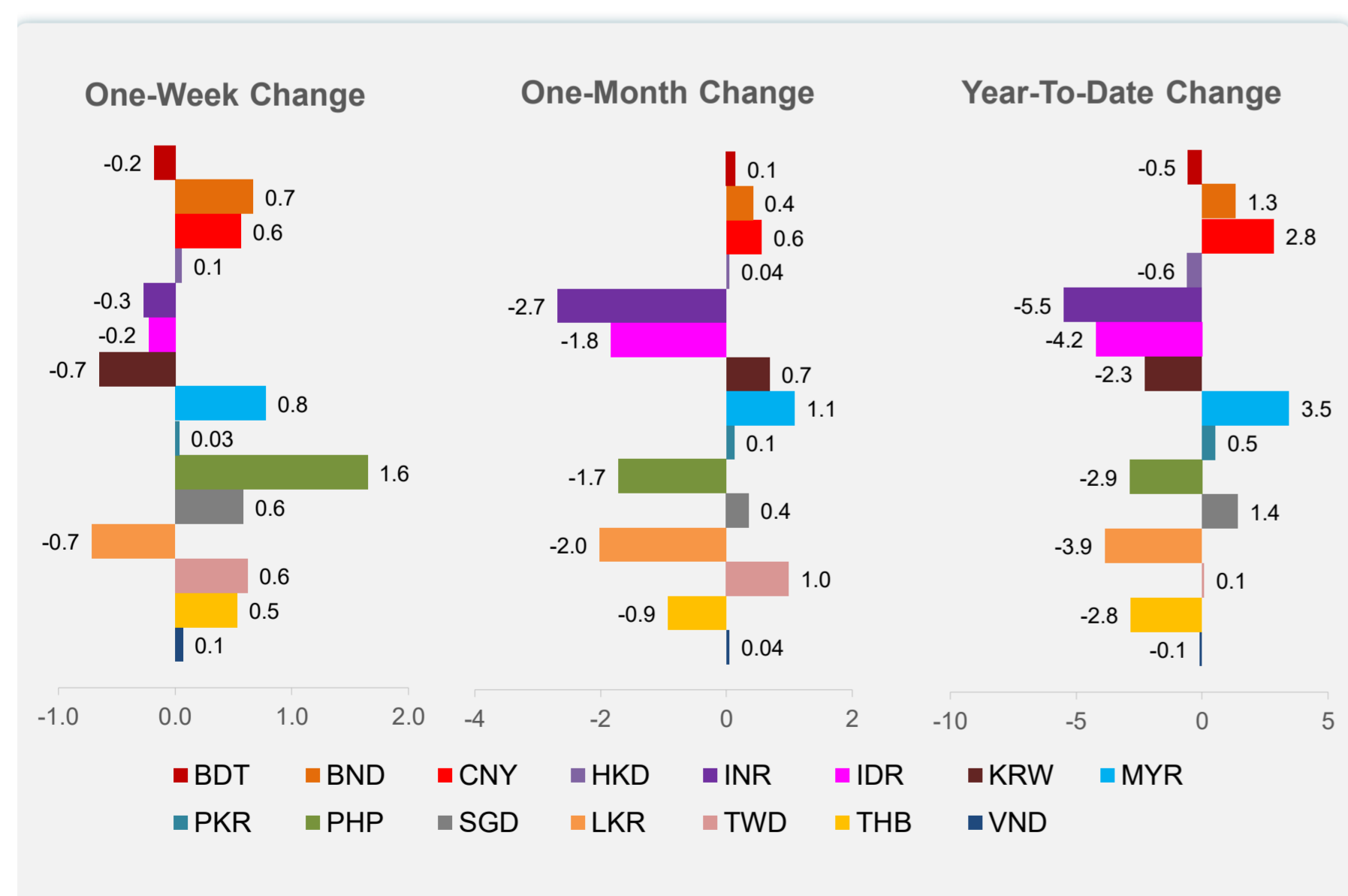
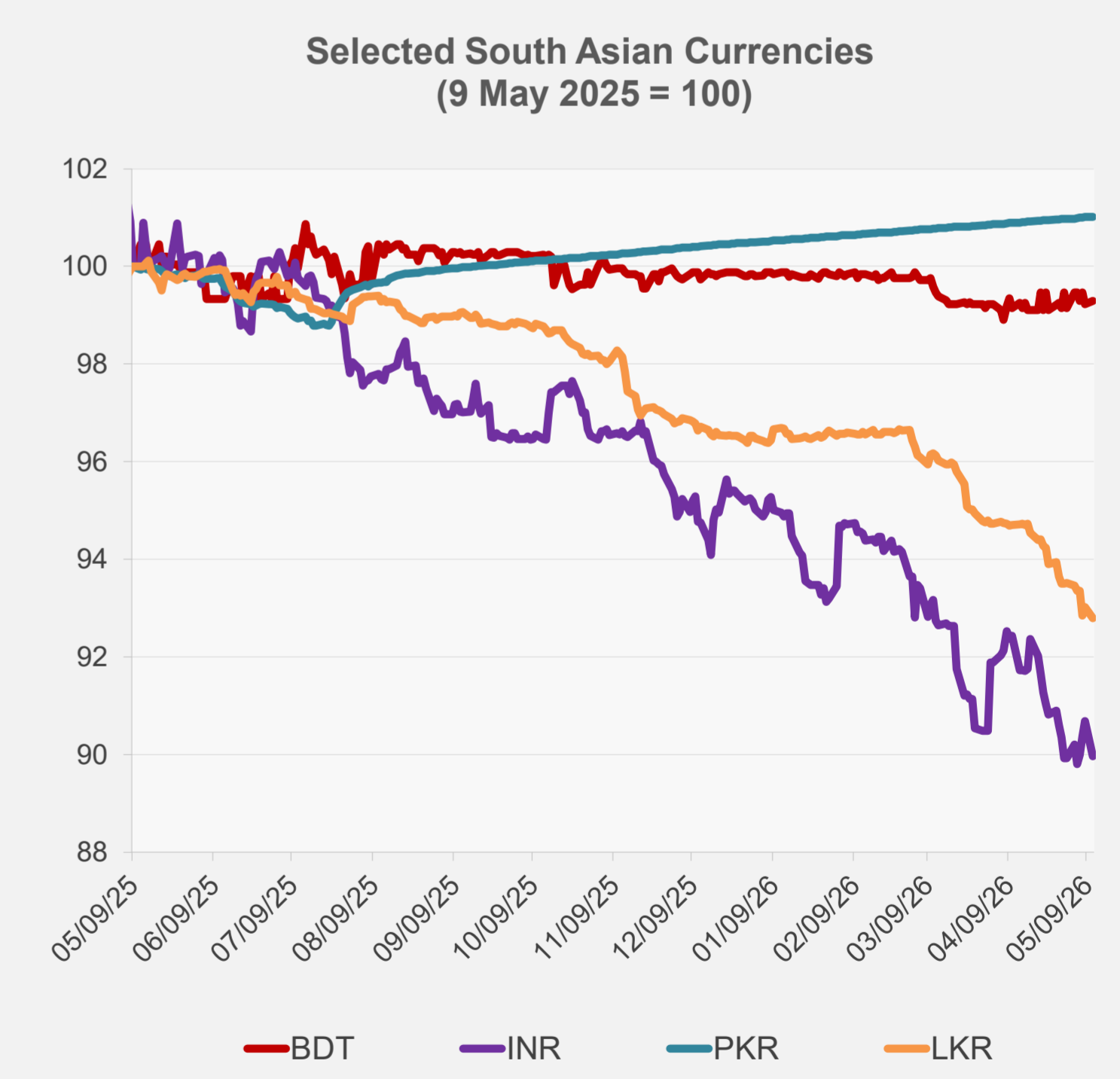
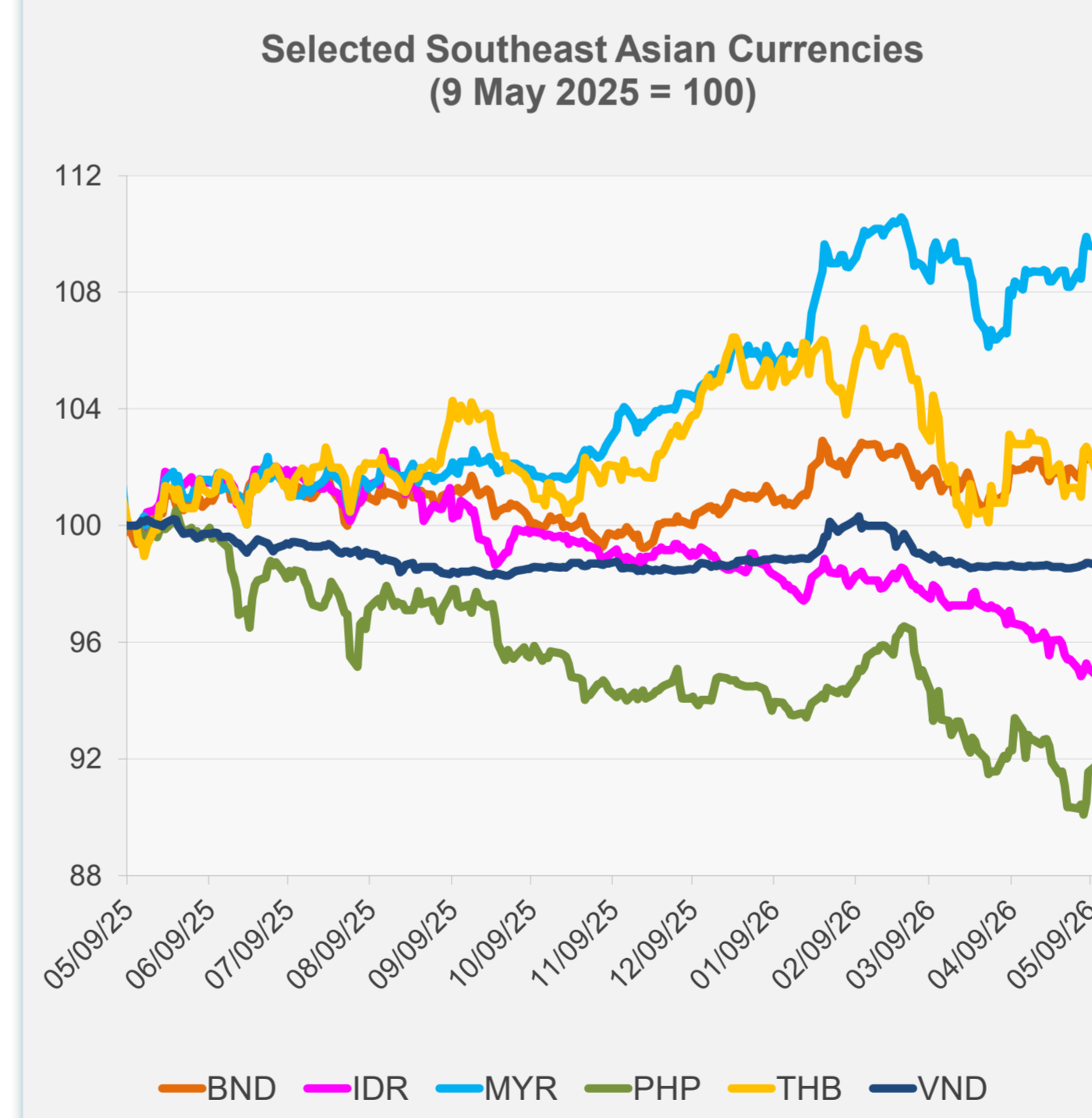


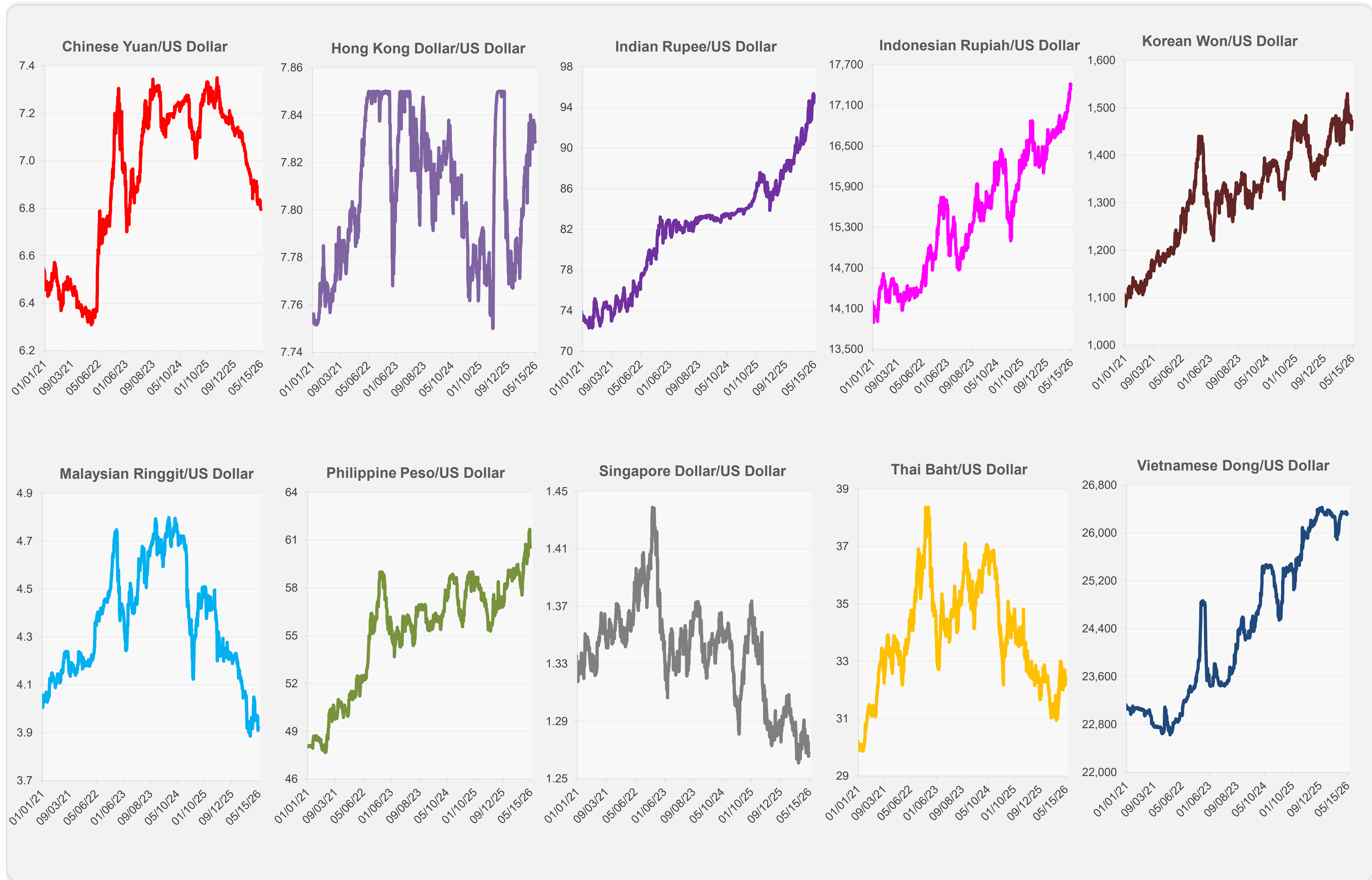
	Latest Closing	% change from Previous Day	% change from 01-Jan-26
Euro	0.85	0.04	0.30
Japanese yen (JPY)	157.12	-0.18	-0.73
Bangladeshi taka (BDT)	122.93	0.06	-0.55
Brunei dollar (BND)	1.27	-0.09	1.31
Chinese yuan (CNY)	6.80	0.09	2.84
Hong Kong dollar (HKD)	7.83	0.00	-0.58
Indian rupee (INR)	95.20	-0.81	-5.49
Indonesian rupiah (IDR)	17,410.00	-0.26	-4.22
Korean won (KRW)	1,472.40	-0.05	-2.27
Malaysian ringgit (MYR)	3.92	-0.04	3.45
Pakistan rupee (PKR)	278.66	0.01	0.52
Philippine peso (PHP)	60.54	0.24	-2.87
Singapore dollar (SGD)	1.27	-0.06	1.40
Sri Lanka rupee (LKR)	322.05	-0.24	-3.87
Taipei,China NT dollar (TWD)	31.42	0.04	0.07
Thai baht (THB)	32.43	-0.68	-2.84
Vietnamese dong (VND)	26,325.00	-0.06	-0.09



NIE = Newly Industrialized Economies



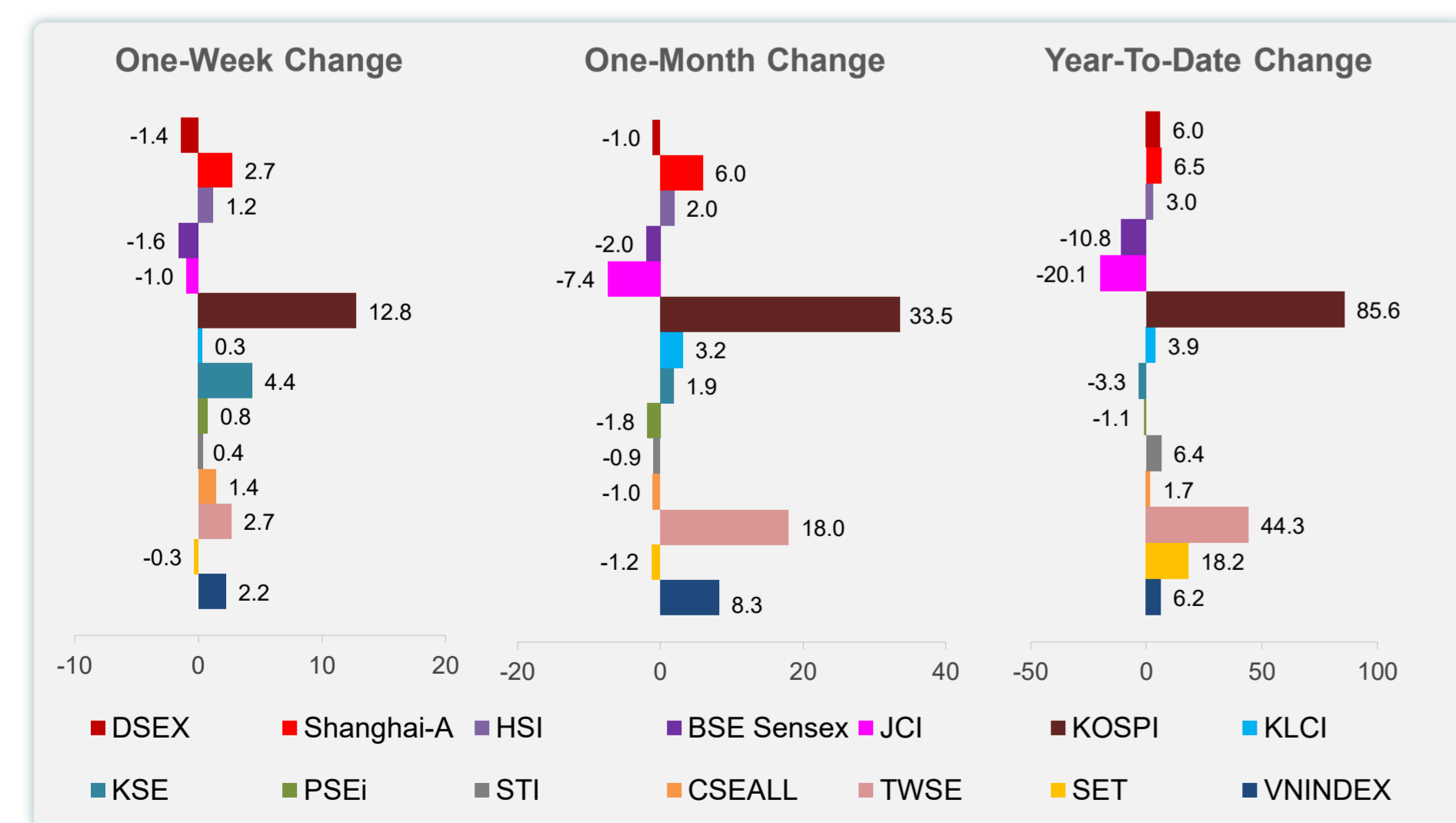
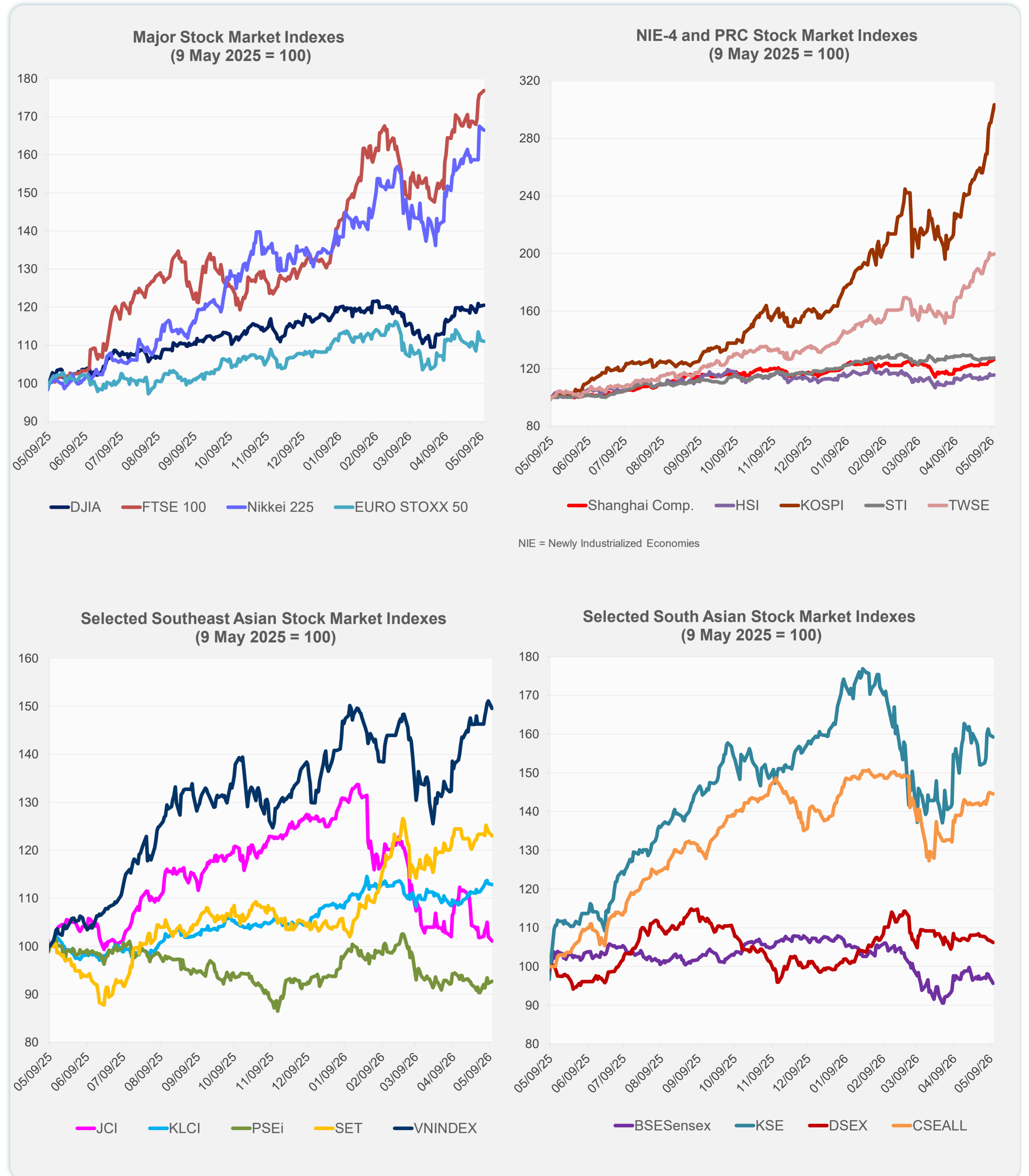
Note: Negative/Decreasing values indicate depreciation of local currency, and positive/increasing values indicate appreciation.  
Source: ADB calculations using data from Bloomberg and Haver Analytics.



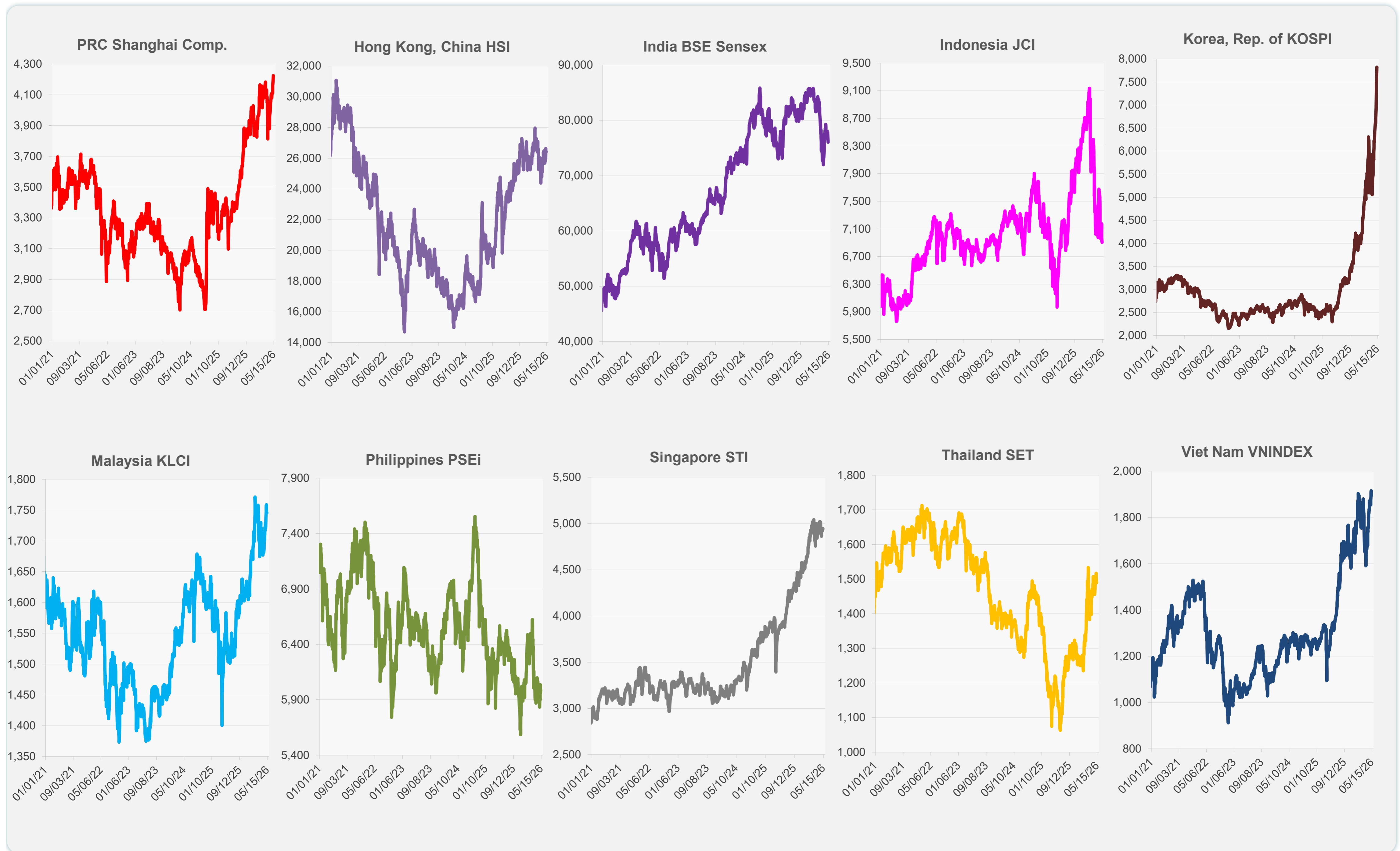
Source: Haver Analytics.

Daily Market Watch  
**STOCK INDEXES**

	Latest Closing	% change from Previous Day	% change from 01-Jan-26
US Dow Jones Ind Avg	49,704.47	0.19	3.41
US NASDAQ	26,274.13	0.10	13.05
US S&P 500	7,412.84	0.19	8.29
UK FTSE 100	15,133.54	0.47	34.38
EURO STOXX 50	5,895.45	-0.27	1.80
Japan NIKKEI 225	62,417.88	-0.47	23.99
Bangladesh DSEX	5,205.26	-0.55	6.00
PRC Shanghai Comp.	4,225.02	1.08	6.45
Hong Kong, China HSI	26,406.84	0.05	3.03
India BSE Sensex	76,015.28	-1.70	-10.77
Indonesia JCI	6,905.62	-0.92	-20.14
Korea, Rep. of KOSPI	7,822.24	4.32	85.62
Malaysia KLCI	1,745.31	-0.16	3.88
Pakistan KSE 100	170,628.70	-0.42	-3.31
Philippines PSEi	5,986.85	0.43	-1.09
Singapore STI	4,942.77	0.42	6.38
Sri Lanka CSEALL	23,011.72	-0.23	1.71
Taipei, China TWSE	41,790.06	0.45	44.28
Thailand SET	1,489.29	-0.74	18.23
Viet Nam VNINDEX	1,895.50	-1.04	6.22



Sources: ADB calculations using data from Bloomberg and CEIC Data Company.

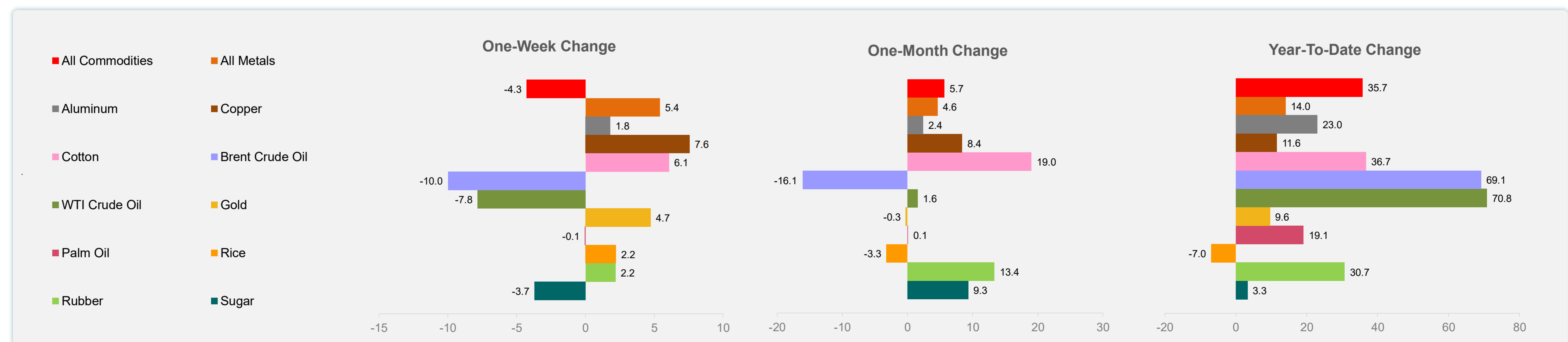
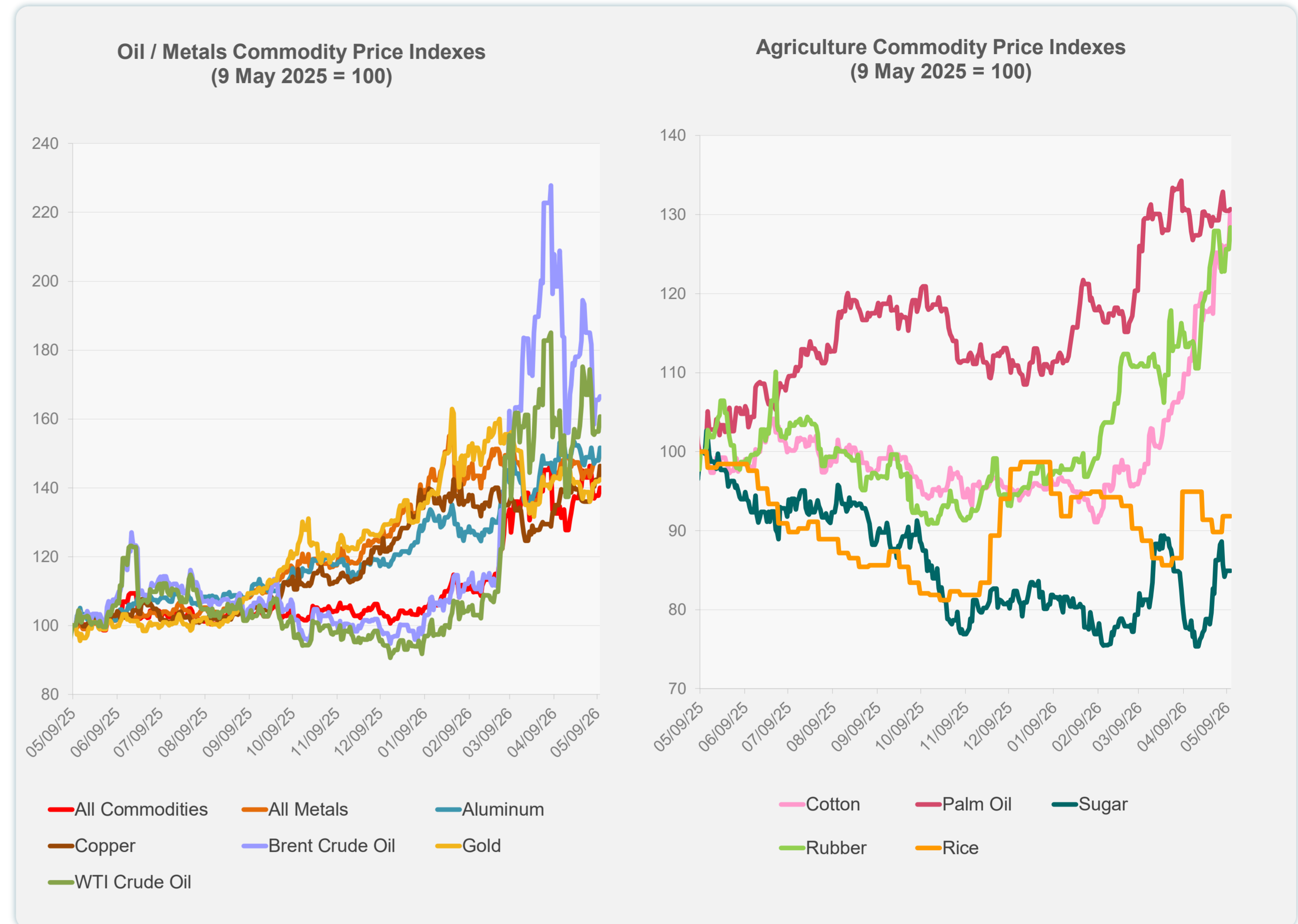


Sources: ADB calculations using data from Bloomberg and CEIC Data Company.

Daily Market Watch  
**COMMODITY PRICES**

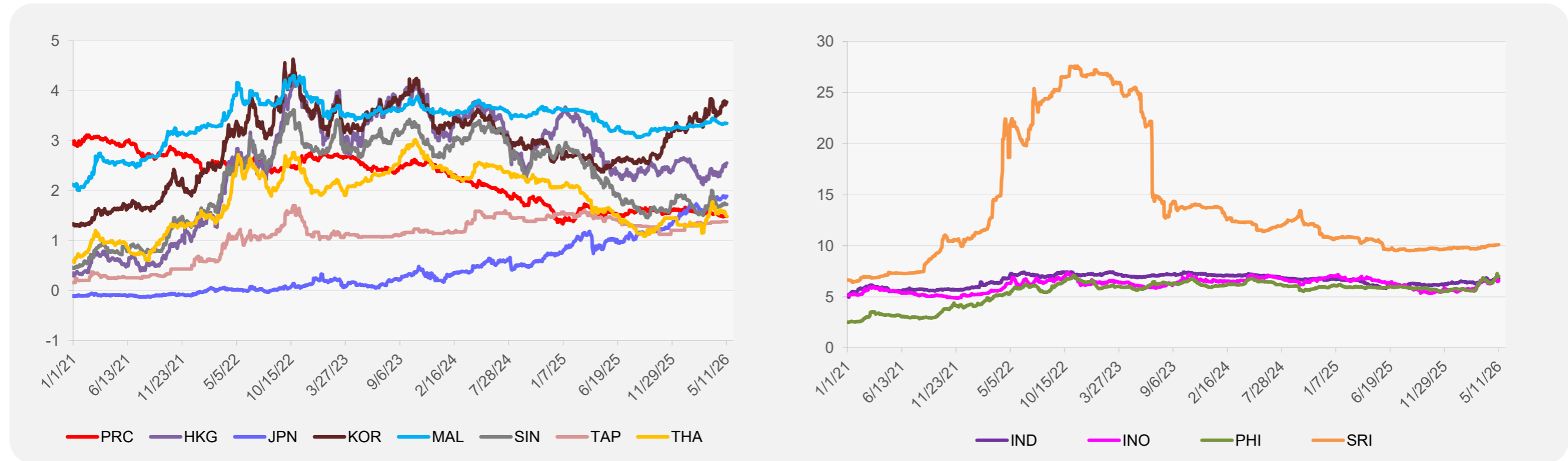
	Unit	Latest Closing	% change from Previous Day	% change from 01-Jan-26
S&P All Commodities	US\$	744.50	1.68	35.73
S&P All Metals	US\$	505.98	2.00	14.02
Aluminum	US\$/metric ton	3,650.40	2.46	22.99
Copper	US\$/metric ton	13,893.11	2.79	11.56
Cotton	US cents/lb	84.77	3.72	36.68
Brent Crude Oil	US\$/barrel	105.62	0.65	69.14
WTI Crude Oil	US\$/barrel	98.07	2.78	70.79
Gold	US\$/troy oz	4,736.17	0.44	9.65
Palm Oil	US\$/metric tonne	1,153.52	0.18	19.09
Rice <sup>1</sup>	US\$/metric ton	415.00	0.00	-6.95
Rubber <sup>2</sup>	US\$/kg	281.00	2.18	30.70
Sugar	US cents/lb	15.28	0.00	3.31

<sup>1</sup> Latest closing price from 6 May 2026.  
<sup>2</sup> Singapore Exchange, Ribbed Smoked Sheet Rubber.

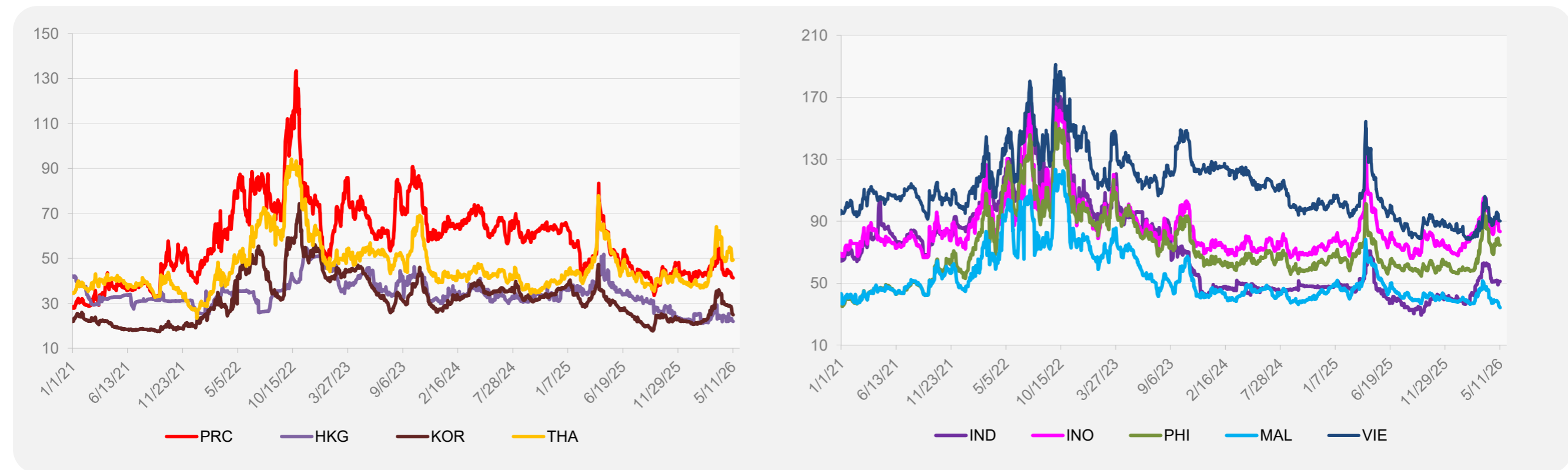


Source: ADB calculations using data from Bloomberg.

### 5-YEAR LOCAL CURRENCY GOVERNMENT BOND YIELDS (%)



### 5-YEAR CREDIT DEFAULT SWAP<sup>1</sup>



<sup>1</sup> In USD and based on sovereign bonds.  
Source: ADB calculations using data from Bloomberg.